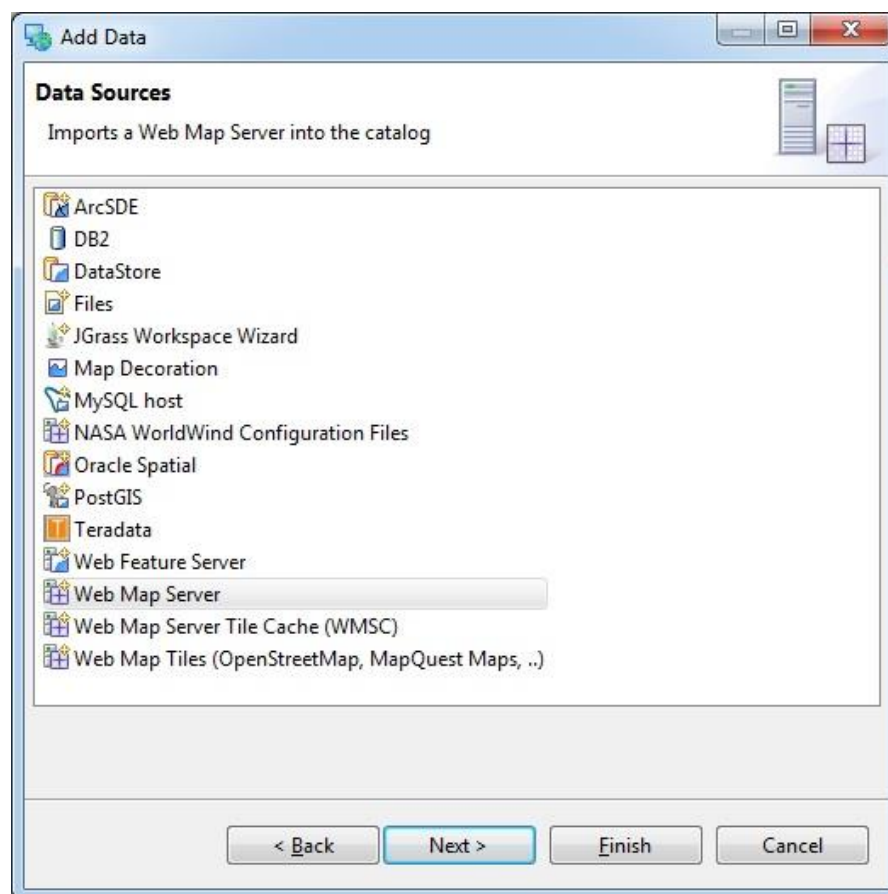


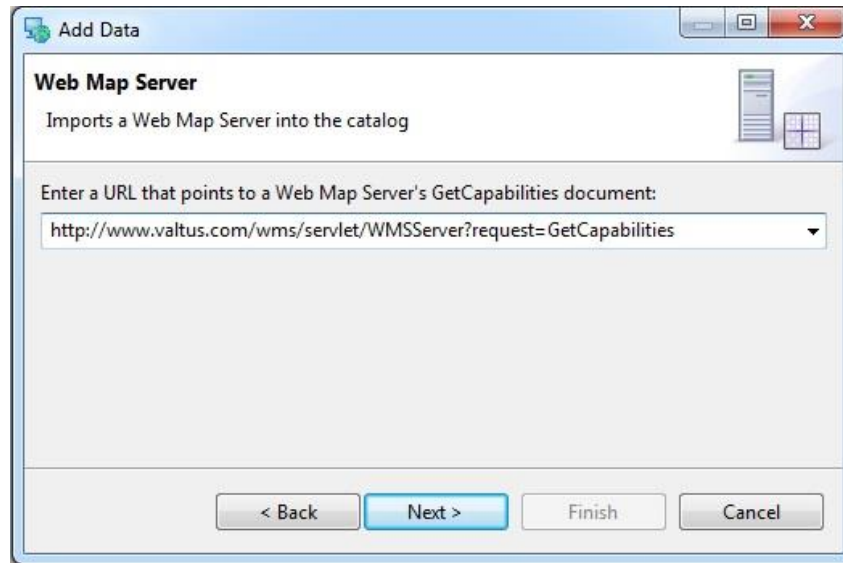
This document provides step-by-step instructions on getting the most from your Valtus Views | Spatial Data as a Service subscription. If at any time you have additional questions or need assistance on features not covered here, our contact information is provided in the last section.

To add the Valtus Views WMS services to a uDig map:

- Add a new layer (File -> New -> New Layer)
- The Add Data window will appear. From the list of Data Sources, select Web Map Server and click Next.



- Enter the Valtus URL:
<http://www.valtus.com/views/wms>
- Click 'Next'



- A list of Valtus Views services will be displayed. Select the service(s) you want to add and click Finish.
- Views will be added to your map.

The Valtus Technical Support Team is here to help. Should you require assistance or would like additional information, please email us at support@valtus.com.