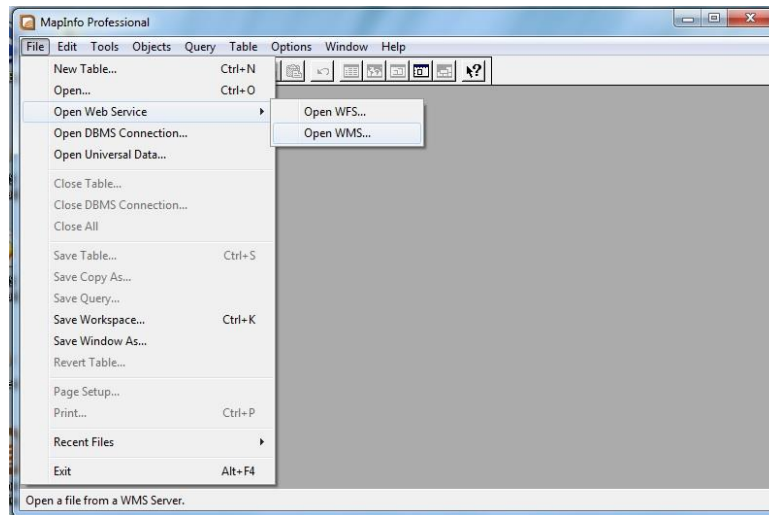


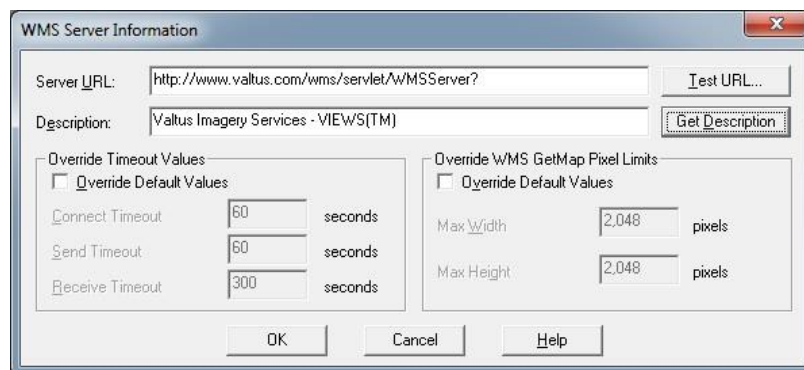
This document provides step-by-step instructions on getting the most from your Valtus Views - Spatial Data as a Service subscription. If at any time you have additional questions or need assistance on features not covered here, our contact information is provided in the last section.

These steps only need to be completed the first time you add the Views imagery service.

- Select "File" then "Open Web Service" then "Open WMS..."

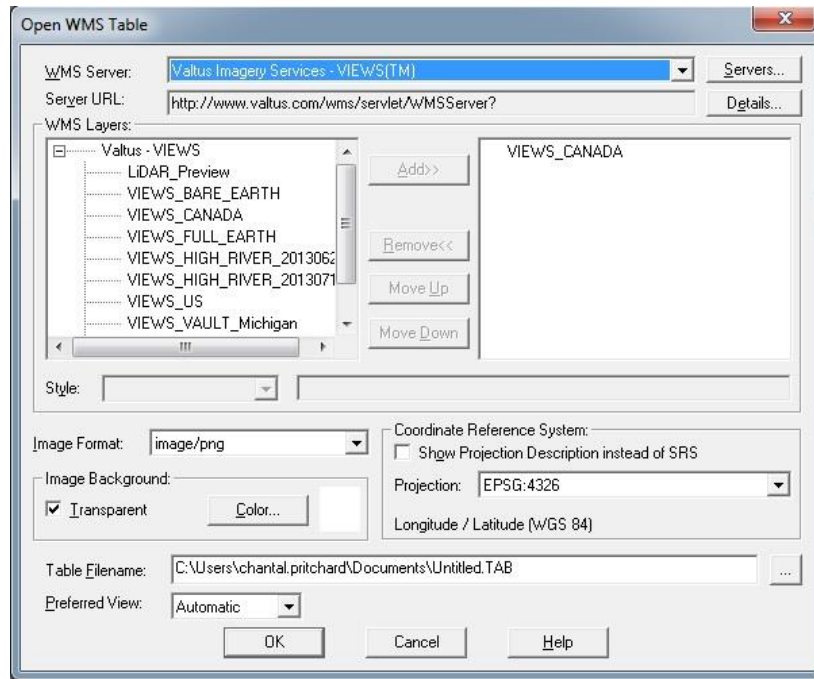


- Select "Servers" which opens a dialog. Select "Add"
- Under "Server URL:" add <http://www.valtus.com/views/wms>
- Select the "Get Description" which will open a window requesting your username and password. Enter your username and password and hit 'OK'
- The 'Description' field should now read "Valtus Imagery Services - VIEWS(TM)"



- Select "OK"

- From the "WMS Server" list select "Valtus Imagery Services - Views" and click 'OK'
- A list of Valtus Views services will be displayed. Select the layer(s) you want, click Add, then click 'OK'



- Views is added to your map.

**The Valtus Technical Support Team is here to help. Should you require assistance or would like additional information, please email us at [support@valtus.com](mailto:support@valtus.com).**