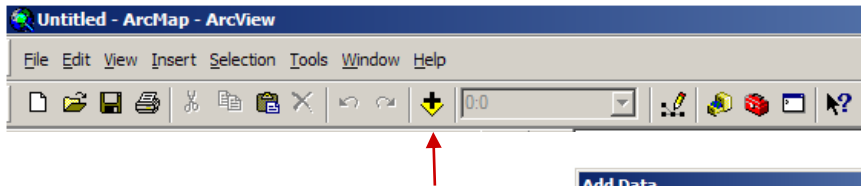


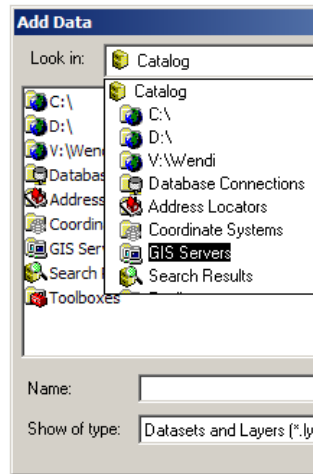
This document provides step-by-step instructions on getting the most from your Valtus Views | Spatial Data as a Service subscription. If at any time you have additional questions or need assistance on features not covered here, our contact information is provided in the last section.

These steps only need to be completed the first time you add the Views imagery service.

- Click the “Add Data” button, or navigate to File - Add Data - Add Data...:

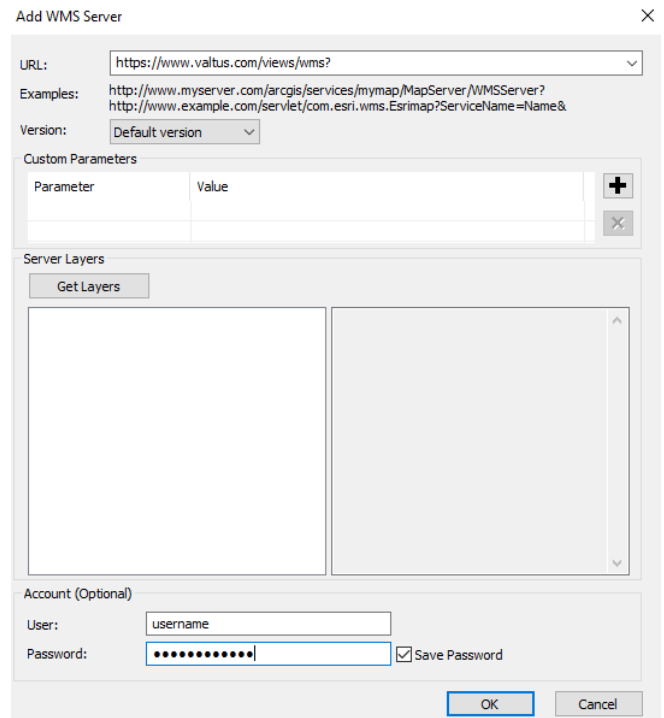


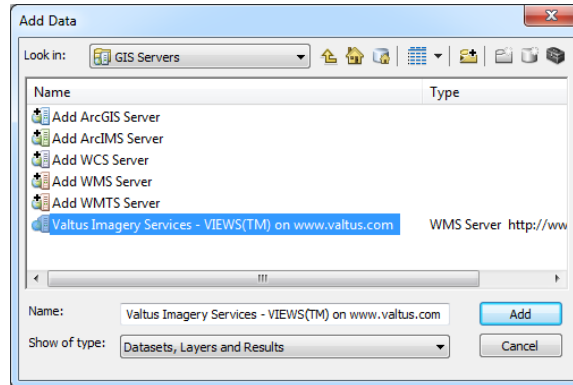
- Choose “GIS Servers” from the drop-down menu:



To Load Views as a WMS service:

- Double-click "Add WMS Server"
- The Add WMS Server window opens. In the URL field, add the URL <http://www.valtus.com/views/wms>
- Under Account (Optional) Fill in your username and password. Click the 'Save Password' box if you would like ArcMap to remember your password. Click OK.





- Valtus Imagery Services - Views will be added to your list of GIS Servers. Select it and click 'Add'
- A list of available Valtus services is displayed. Select the service which you would like to add your map and click 'Add'

The Valtus Technical Support Team is here to help. Should you require assistance or would like additional information, please email us at support@valtus.com